

# Unidoz

Dosing and Cleaning  
Equipment



CLEANING



TRANSPORT



HEALTH SERVICE



FOOD INDUSTRY



AGRICULTURE

# CATALOG







Unidoz is a leading manufacturer specialized in design and production of chemical proportioners, foamers, sprayers and satellites for centralized systems for industrial cleaning. The company has grown to become one of the most sought-after solutions providers for clients across different industries, including cleaning, farms, transport, and the food industry

#### **WHY BUY FROM US?**

Our service and support -Customer service is our no.1 priority.

Quality, performance and reliability – All we build is made to last

Competitive pricing

Innovative - We're always working to improve our products and design new solutions

#### **BRANDING**

Build Your Brand With Us

We understand that promoting your brand will increase your business. We can engrave/print your logo on our products

#### **DEMONSTRATION AND TRAINING PROGRAMS**

Learn about our products with our technical specialist We conduct training and demonstrations at the customer's headquarters. The training cover the basics for selling and maintaining the systems, as well as in-depth direction on full installation and programming. Application based case studies relating to chemical dosing & disinfection products and systems



# TANK FOAMERS

## UNIDOZ PORTABLE TANK FOAMERS



200L TANK



130L TANK



70L TANK



With the added advantage of an integrated pump driven by compressed air, the Unidoz Tank Foamer stands out in its ability to generate rich and finely aerated foam. This apparatus efficiently utilizes pre-mixed chemicals sourced directly from the tank. The foam is then expelled via the discharge hose and fan nozzle, resulting in expansive coverage of the treated surface. The Unidoz Tank Foamer guarantees a remarkable level of foam consistency and distribution, making it an ideal choice for various applications.

Three tank capacities

TANK  
FOAMER

BUILD TO LAST

Unidoz

NEW

Adjustable foam consistency (wet/dry)

Easy liquid level monitoring

Food-approved hose

High-reliability pump

Large filler opening

Portable

Easy draining

Three tank capacities (70L, 120L, and 200L)





# TANK SPRAYER

## UNIDOZ PORTABLE TANK SPRAYERS



200L TANK



130L TANK



70L TANK



The Spray Applicator offers a versatile solution for industrial settings, allowing effortless application of pre-mixed chemical solutions. Available in multiple versions, this portable device operates on battery power, electricity, or an air-pressure pump mechanism. With a wide array of options, the applicator enables precise adjustments for both spraying intensity and coverage. Whether powered by battery, electricity, or air pressure, the Spray Applicator empowers users to efficiently distribute chemical solutions over a broad area, making it a reliable choice for various operational needs.

## SPRAYER BIEL

The sprayer applicator of powders mixed with water.

Sprayer for powdery substances that require constant mixing in water during application. Recommended for spraying with lime, diatomaceous earth, and many other substances.

Pour mixed powder with water into the device. The device has the function of holding the substance in the tank during the application of the agent through the lances.



## FEATURES



Three tank capacities



Large filler opening



High quality wheels



Long working time



Foamer unit for ready to use chemical solution



High-quality discharge hose



Wand On/off can be controlled at hose end



Air pressure or main power operated



# TANK FOGGERS



## SANITIZE, COOLING, HUMIDITY, PROBIOTICS AND ODOR CONTROL

Introducing our line of integrated tank fogging devices on wheels - a mobile solution designed for producing fine mist and droplets, specifically specializing in the creation of cold fog. The Industrial Tank Fogger, suitable for various industries and agriculture, empowers you with versatile spraying capabilities.



FOGGER TANK

Fogger powered by compressed air with an integrated telescopic lance lifting the nozzles over 3m in height. Specially selected ULV nozzles allow to achievement of high-quality fog.



FAN FOGGER

Fogger with integrated high-performance tank. The incorporation of an integrated fan extends the reach of the mist, enhancing its coverage. The inclusion of fan speed control empowers you to finely adjust the fog's projection distance. Meanwhile, a built-in mixing device ensures constant liquid stirring during operation.



TURBO FOGGER

Fogger integrated with a high-performance tank. With the addition of an integrated fan and blower, the reach of the mist is extended, significantly amplifying its coverage. The inclusion of fan speed control empowers you to finely adjust the fog's projection distance. Meanwhile, a built-in mixing device ensures constant liquid stirring during operation. No air pressure connection required.





# CANISTER MOUNTED DOSING SYSTEM



MS01



M01

Portable dispensing system for liquid chemical concentrates makes sure that you always get accurate diluted ready to use product. Economic, reliable, made from the highest quality materials.

We designed proportioner to make cleaning easier, faster and safer.

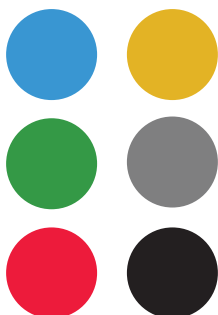
UNIDOZ Dosing system can be use in any location with access to the water source, what saves users time. Small size makes it ideal for trolley service.

We designed proportioner to make cleaning easier, faster and safer.

## FEATURES:

- Suitable to all types of canisters and bottles;
- Economic
- Quick installation
- Simple operation
- Color coddling
- 12 dilution rates (from 0,3% to 14%);
- Saves employee time. Minimal training time
- Results in faster and easier new employee adoption

## AVAILABLE COLORS





# CHEMICAL PROPORTIONERS



1 - WAY



2 - WAY



3 - WAY



4 - WAY

Wall-mounted stainless steel cover chemical proportioner for accurately diluting 1, 2, 3, or 4 chemical concentrates to required ratios and filling any sized container with diluted, ready-to-use chemical solutions.

## KEY FEATURES:

**Multiple configurations** - Your own configuration of the number of built-in dispensers for filling bottles or buckets.

Flow rate 7l/min with short discharge hose for bottle fill

Flow rate 14l/min with 2 meter discharge hose

Durable, stainless steel cover

12 dilution levels (from 0,3% to 14%)

## 4WAY CABINET



The 4WAY CABINET Closed-Loop Dosing System is a secure, wall-mounted key-operated dosing system designed for four 5-liter chemical canisters. It utilizes standard city water pressure to draw and blend chemical products into water, creating precisely diluted solutions. These solutions are then dispensed through four flexible discharge hoses, catering to both bottle and bucket filling needs.

## KEY FEATURES:

- **Chemical Security:** The proportioner locks chemical products securely inside, preventing theft or misuse.
- **Closed-Loop Protection:** This system ensures that no one comes into contact with concentrated chemicals.
- **Individual Dispensing:** Products do not mix with each other; each chemical is dispensed separately.
- **Versatile Dilution Levels:** Enjoy 12 dilution levels ranging from 25ml to 1400ml per 10 liters of water.
- **Customization:** Logo and product stickers are included in the price upon request.







# GASTRO WASH



Spray applicator for diluting two products with rinsing operation. This product had been designed to spray clean and sanitize floors and surfaces.

This venturi injection system uses standard city water pressure to draw and blend chemical concentrates into the water stream at the same time to create an accurately diluted solution that is projected through the discharge hose and spray gun.

## TECHNICAL DATA:

- Material: stainless steel, brass, PP, all components that contact chemicals are designed for chemical and corrosion resistance
- On/off can be controlled at the hose end
- Available with blue food-approved hose, spray gun, and hose rack
- Metering tips for dilution ratios from 0,5% max 10%
- Working temperature 60° C max.
- Water pressure 2,5 Bar up to 8 Bar
- Clean/rinse/sanitize functions are clearly labeled
- Industrial-strength design holds up in tough environments
- Backflow protection

# UNIDOZ SPRAYER



A wall-mounted sprayer designed for spray cleaning (mixes concentrate chemical with a stream of water) using the standard pressure from the water supply.



## FEATURES:

- The precisely diluted solution is regulated by 12 dosing tips from 1% to 12%
- The spray gun mounted at the end of the discharge hose allows easy operation of the sprayer
- Available with 5m, 10m, 15m, 20m, and 25m hose, lance or 2m telescopic lance, and hose holder
- Water pressure from 2.5 to 10 Bar
- Material: stainless steel
- Ideal for car washes, industry, and agriculture



# CART SG

## HEAVY DUTY PLASTIC CART

Durable cart with integrated drip tray to prevent spills during transport. Captures leaks from drums, canisters, and equipment. Carries two 25L canisters with ease. The open platform adapts to various uses—as a transfer trolley or base for cleaning satellites, chemical dispensers, and more. Compliant with HACCP, IFS, and other industry standards. Ideal for agriculture, industry, and food sectors.



## FOAM DISINFECTION MAT

Disinfecting footwear at the entrance to the clean area is one of the most crucial steps for maintaining a high level of biosecurity.

### HOW IT WORKS

Spray foam cleaners are sprayed directly into the floor. Chemicals added to foam cleaners help prevent against the spread of dangerous microorganisms in places where crops grow and where food is produced or packaged.



## TECHNICAL DATA:

- Discharge hose, stainless steel foam wand and fan nozzle
- Adjustable foam consistency (wet/dry)
- Foam throw distances up to 2m
- Possibility to install up to 3 line stainless steel nozzles
- Foam Disinfection Mats come in a variety of combinations







# UNIDOZ SD-01

## QUICK FILL SYSTEM



Versatile FAST FILL STATION that dilutes chemical concentrates with water to create ready-to-use cleaning products.

Large tank capacity allows for quick cleaning machines tanks refilling.

### ADVANTAGES:

- 200L tank
- Gravity discharge at 120L/min
- 12-level chemical dilution system
- Stainless steel frame

# UNIDOZ SD-02

## QUICK FILL SYSTEM



Versatile Fast Fill Station that dilutes chemical concentrates with water to create ready-to-use cleaning products.

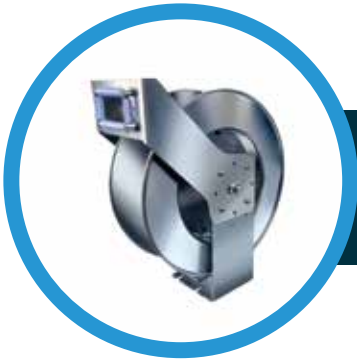
Large tank capacity allows for quick cleaning machines tanks refilling.

### ADVANTAGES:

- 600L tank
- Gravity discharge at 120L/min
- 12-level chemical dilution system
- Stainless steel frame

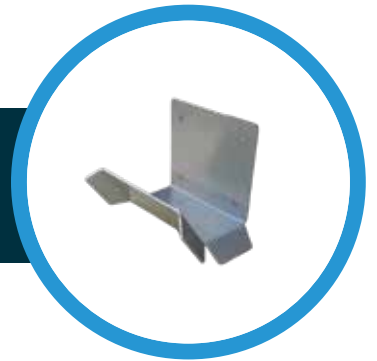






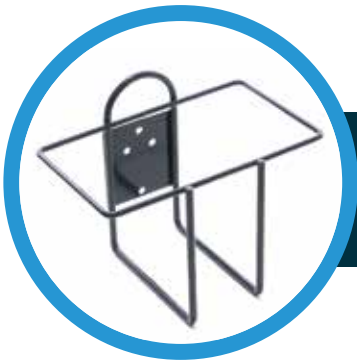
## HOSE REEL:

Stainless steel spring driven hose reels, 1/2 hose, length 20 m



## HOSE HANGER:

Stainless steel wall-mounted bracket for hanging hoses



## WIRE RACKS:

Stainless steel 5L, 10L, 20L canister holders



## WIRE RACKS:

500ml and 1000ml bottle holders.



## SPRAYING LANCE:





**Contact phone**  
+ 48 516 673 812

**Website**  
[www.unidoz.com](http://www.unidoz.com)

**Email adress**  
[info@unidoz.com](mailto:info@unidoz.com)

**Address:**  
Unidoz Sp. zo.o.  
Hallera 5/14, 03-464 Warszawa  
Poland



SCAN ME

**Unidoz**